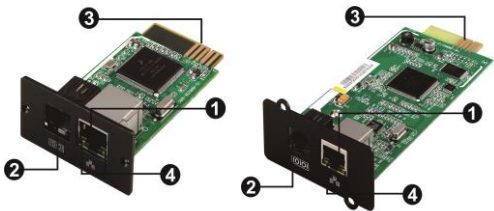


# SNMP Web Card/Box Quick Guide

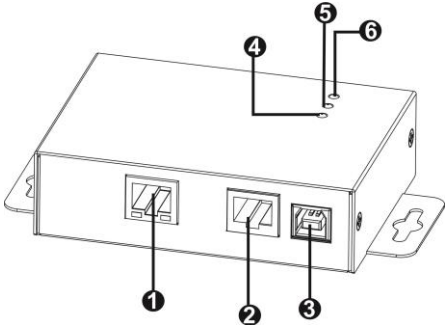
V. 1.3

## 1. Overview



- ① Ethernet port (10/100Base-T)
- ② Sensor port
- ③ Golden finger: connects to UPS slot
- ④ Ethernet port status LEDs

### SNMP I      SNMP II (Only for 3-phase online UPS)



- ① Ethernet port(10/100Base-T)
- ② RS-232 port
- ③ 5Vdc DC input
- ④ Data receiving indicator
- ⑤ Data transmission indicator
- ⑥ Power indicator

Ethernet port status LEDs:

|                  |       |                                      |
|------------------|-------|--------------------------------------|
| 100M LED (Green) | Flash | Port is operating at 100Mbit/s       |
|                  | Off   | Card is not connected to the network |
| 10M LED (Yellow) | Flash | Port is operating at 10Mbit/s        |
|                  | Off   | Card is not connected to the network |

## 2. Installation

If using SNMP card, please follow below steps to install SNMP card first:

- Step 1:** Remove the cover of intelligent slot on the back panel of UPS and retain the screws
- Step 2:** Slide the card into the open slot and secure with the screws from step 1. (see chart 2-1)



Chart 2-1

## 3. Connection

Refer to chart 2-2 for connecting the SNMP web card and chart 2-3 for connecting SNMP box.

### If using SNMP card:

Plug Ethernet cable to the Ethernet port (RJ-45) on the SNMP card. Use one more Ethernet cable. Connect one end to the sensor port on the SNMP card and the other end to the optional environmental monitoring device.

### If using SNMP box:

Use one Ethernet cable to connect to Ethernet port (①) of the box. Use one RJ45 cable to connect to RS-232 port (②) of the box and RS-232 port of the UPS. Then, use bundled USB cable to connect to USB port (③) of the box and 5V DC USB power source.

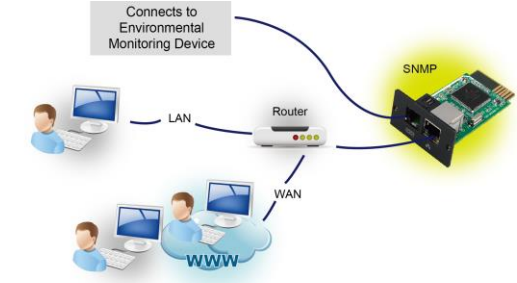


Chart 2-2

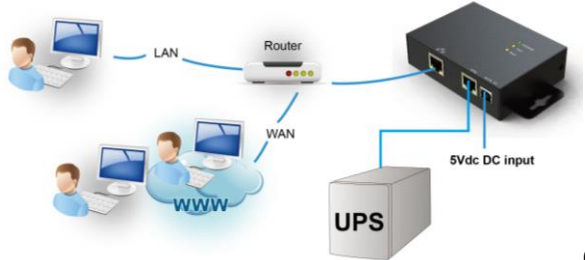


Chart 2-3

## 4. Configuration

- a) Please install SNMP web manager software in your PC. After software is installed successfully, the Installer will leave a shortcut icon on your desktop.



Chart 3-1

- b) Enter specific IP address to search all SNMP devices in LAN. (The SNMP web manager will automatically collect the IP address from sever by default via a DHCP server. It will apply default IP address of 192.168.102.230, default subnet mask as 255.255.255.0, and default gateway as 0.0.0.0 without a DHCP server.

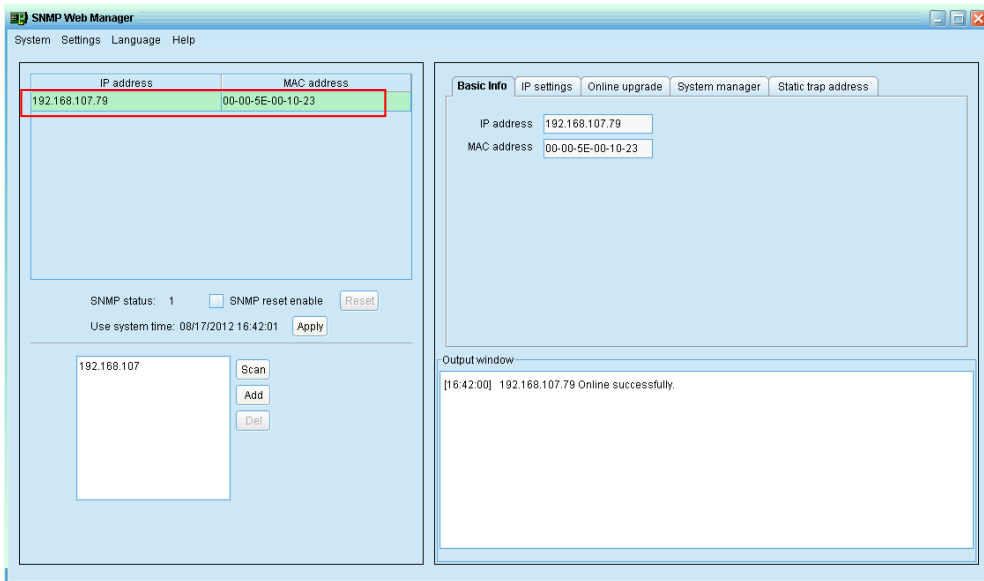


Chart 3-2

- c) User can modify IP setting, online upgrade, password management, and static trap address setting in SNMP Web Manager interface. It is necessary to enter password for any medications. The default password is 12345678.

## 5. Monitoring

Double click the selected device from the device list (refer to Chart 3-2) to open web page as Chart 4-1.

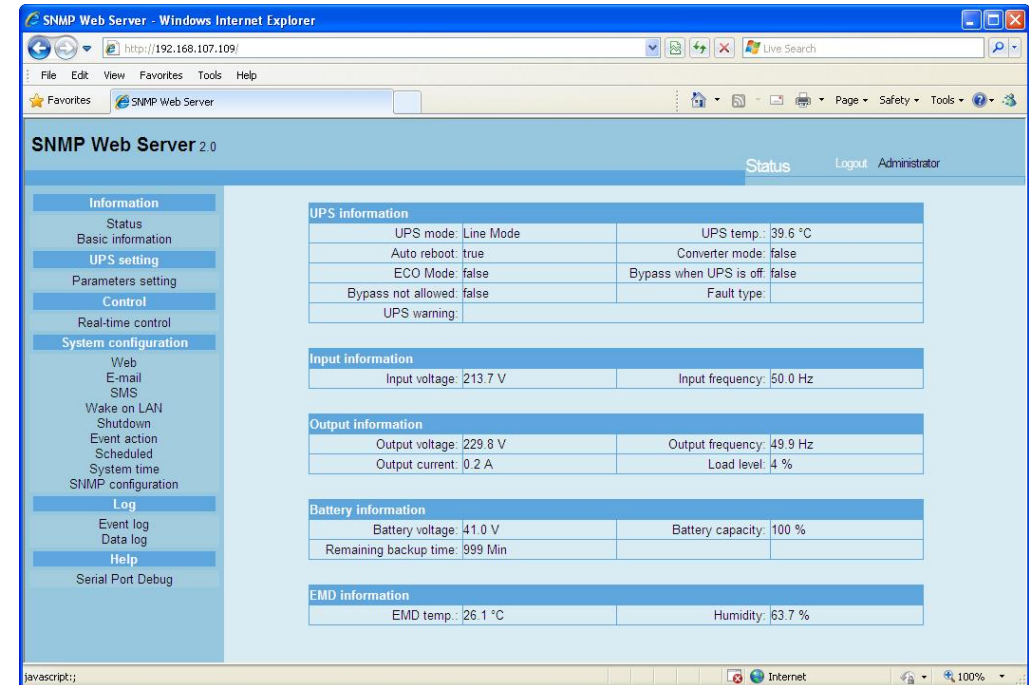


Chart 4-1

Please check SNMP Web Manager User Manual for detailed configuration.